

The Jabra logo consists of the word "Jabra" in a bold, black, sans-serif font, with a registered trademark symbol (®) to its upper right. It is centered within a bright yellow square.

**Jabra®**

Jabra GO™ 6430

Quick Start Guide

---

[www.jabra.com](http://www.jabra.com)

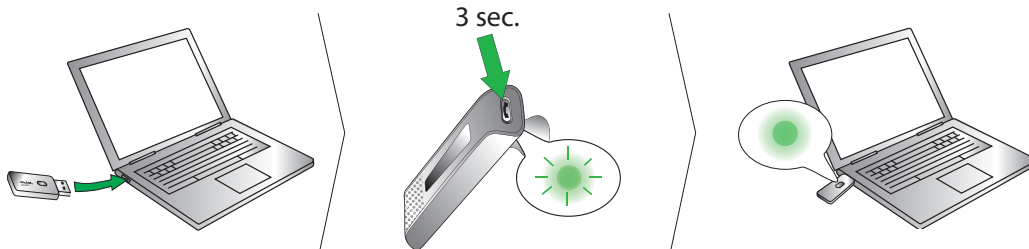
## CONNECT TO SOFTPHONE (PC)

**FR:** Connexion à un logiciel de téléphonie (ordinateur) / **DE:** Anschliessen an ein Softphone (PC) /

**ES:** Conexión a softphone (PC) / **CHT:** 連接至軟體式電話 (電腦)

### Paired at the factory

**FR:** Appairé en usine / **DE:** Werksseitig aneinander gekoppelt / **ES:** Sincronizado de fábrica / **CHT:** 出廠時已經配對



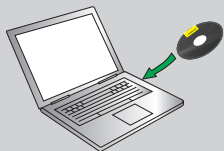
### INSTALL JABRA PC SUITE SOFTWARE

**FR:** Installez le logiciel Jabra PC Suite

**DE:** Installation der Jabra PC Suite

**ES:** Instalar el software de Jabra PC Suite

**CHT:** 安裝 Jabra PC Suite 軟件

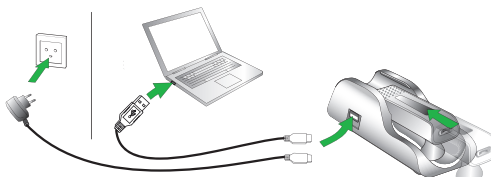


### CONNECT TO POWER

**FR:** Raccordement au secteur / **DE:** Anschluss an die

Stromversorgung **ES:** Conexión a la red eléctrica /

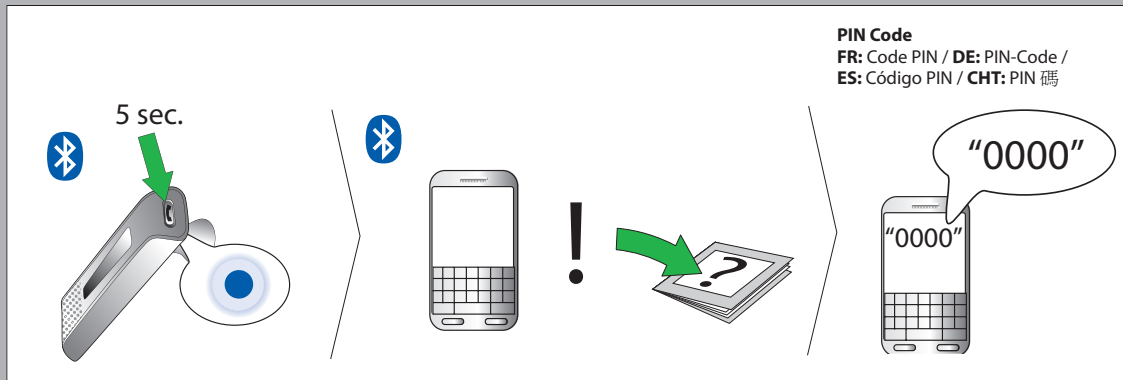
**CHT:** 連接至電源



## CONNECT TO MOBILE PHONE USING BLUETOOTH™

**FR:** Connexion à un téléphone portable en utilisant le *bluetooth* / **DE:** Anschliessen an ein Mobiltelefon mit *Bluetooth* /

**ES:** Conexión a un teléfono móvil mediante *bluetooth* / **CHT:** 使用藍牙連接至手提電話

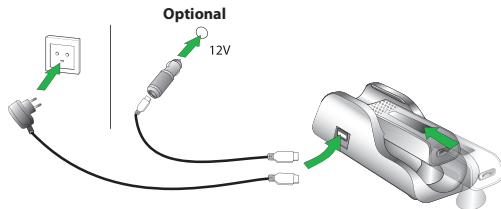


## CONNECT TO POWER

**FR:** Raccordement au secteur / **DE:** Anschliessen an die

Stromversorgung / **ES:** Conexión a la red eléctrica /

**CHT:** 連接至電源



# HEADSET INFORMATION

FR: Informations sur le micro-casque / DE: Informationen zur Bedienung / ES: Información del auricular / CHT: 耳機資訊

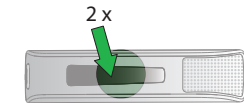
## Answer/end calls (tap)

FR: Répondre/mettre fin aux appels (appui) / DE: Anrufe annehmen/beeenden (tippen) / ES: Responder/finalizar llamadas (pulsar una vez) / CHT: 接聽/結束通話 (輕按)



## Mute/un-mute (double-tap)

FR: Activer/désactiver le mode Secret (double appui) / DE: Stummuschaltung aktivieren/deaktivieren (zweimal tippen) / ES: Activar/desactivar el modo de silencio (pulsar dos veces) / CHT: 靜音/取消靜音 (輕按兩下)



## Volume up/down (slide)

FR: Commande de volume (faire glisser son doigt) / DE: Lautstärkeregelung (ziehen) / ES: Subir/bajar volumen (deslizar) / CHT: 調高/降低音量 (滑動)



## USER MANUAL

For more information refer to the user manual on the CD

FR: MODE D'EMPLOI

Pour plus d'informations, consultez le mode d'emploi sur le CD

DE: BENUTZERHANDBUCH

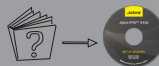
Weitergehende Informationen finden Sie im Benutzerhandbuch auf der CD

ES: MANUAL DE USUARIO

Para más información, véase el manual de usuario o el CD

CHT: 使用者手冊

請參閱 CD 上的使用者手冊，以了解更多詳情



[www.jabra.com](http://www.jabra.com)

## PACKAGE CONTENTS

FR: Contenu de la boîte / DE: Packungsinhalt / ES: Contenidos de la caja / CHT: 包裝盒內容



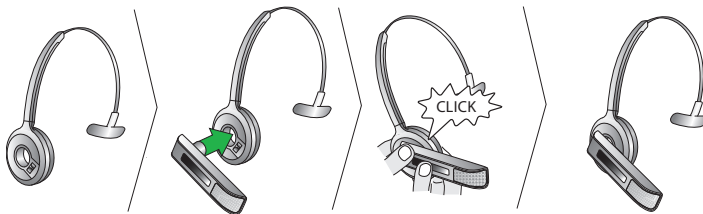
## CHOOSE YOUR WEARING STYLE

FR: Choisissez votre type de port / DE: Auswahl der Trageform / ES: Elija cómo quiere llevarlo / CHT: 選擇佩戴方式

### OPTION A

#### Headband attachment

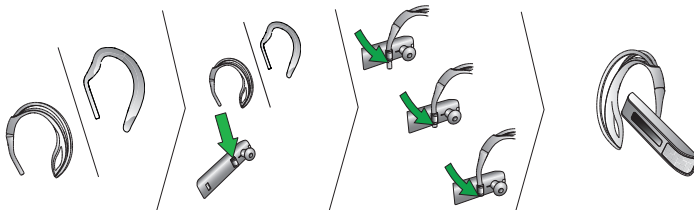
FR: Option A: Serre-tête  
DE: Option A: Befestigung des Überkopfbügels  
ES: Opción A: Diadema para la cabeza  
CHT: 選項 A: 頭帶附件



### OPTION B

#### Earhook attachment

FR: Option B: Fixation du contour d'oreille  
DE: Option B: Befestigung des Ohrbügels  
ES: Opción B: Gancho para la oreja  
CHT: 選項 B 耳勾附件



# CUSTOMER SUPPORT

**FR:** Assistance clientèle / **DE:** Kundenbetreuung / **ES:** Atención al cliente / **CHT:** 客戶支援

## EUROPE

Belgique/Belgium + 49 (0)8031 2651 72  
Czech Republic + 420 800 522 722  
Denmark Kontakt venligst din  
nærmeste forhandler (via  
følgende link)  
www.jabra.dk/forhandler  
Deutschland + 49 (0)8031 2651 72  
España + 34 916 398 064  
France + 33 (0) 130 589 075  
Italia + 39 02 5832 8253  
Luxembourg + 49 (0)8031 2651 72,  
Nederland + 49 (0)8031 2651 72  
Norge + 47 32 22 74 70  
Österreich + 49 (0)8031 2651 72  
Poland 0-801-800-550;  
+ 48 12 254-40-15  
Russia techsupport.ru@jabra.com  
Suomi + 358 204 85 6040  
Sverige + 46 (0)8 693 09 00  
United Kingdom + 44 (0)1784 220 172

## ASIA

Australia 1-800-636-086 (local  
distributor)  
China + 86-21-5836 5067  
Hong Kong 800-968-265 (Toll free)  
India 000-800-852-1185 (Toll free)  
Indonesia 001-803-852-7664  
Japan + 81-3-5297-7976  
Malaysia 1800-812-160 (Toll free)  
New Zealand 0800-447-982 (Toll free)  
Philippines 1800-765-7022 (ETPI)  
1800-1855-0144 (PLDT)  
800-8523-794 (Toll free)  
Singapore 0080-186-3013 (Toll free)  
Taiwan 001-8008523-794 (Toll free)  
Thailand

## MIDDLE EAST/AFRICA

**E-mail Support:** support.mea@gn.com

## USA & CANADA

Canada 1-800-489-4199  
USA 1-800-826-4656

For further languages please refer to the manuals  
on the enclosed CD.

## EUROPE:

EN/FR/DE/IT/NL/ES/DA/SE/NO/FI/PT/RU/TR/CZ/HU

## USA & CANADA:

US/FR/ES/PT

## ASIA:

EN/CHT

A BRAND BY

**GN Netcom**

GN Netcom A/S  
Lautrupbjerg 7  
DK-2750 Ballerup  
Denmark

© 2010 GN Netcom A/S. All rights reserved. Jabra is a registered trademark of GN Netcom A/S. All other trademarks included herein are the property of their respective owners. The Bluetooth word mark and logos are owned by the Bluetooth SIG, Inc. and any use of such marks by GN Netcom A/S is under license. (Design and specifications subject to change without notice).

MADE IN CHINA  
TYPE: GO6400HS/END001W



PATENTS AND DESIGN REGISTRATION PENDING INTERNATIONAL

REGISTER YOUR JABRA AT [JABRA.COM/REGISTER](http://JABRA.COM/REGISTER) – FOR NEWS, SUPPORT AND COMPETITIONS

[www.jabra.com](http://www.jabra.com)