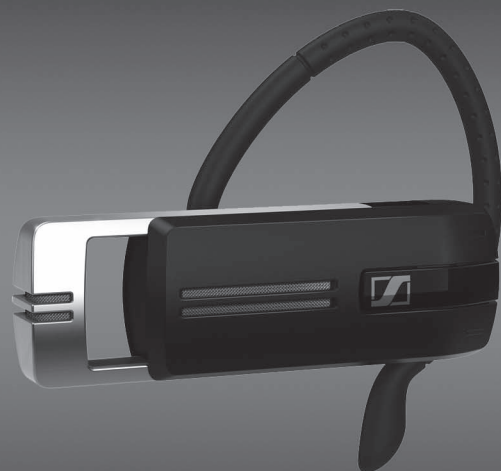


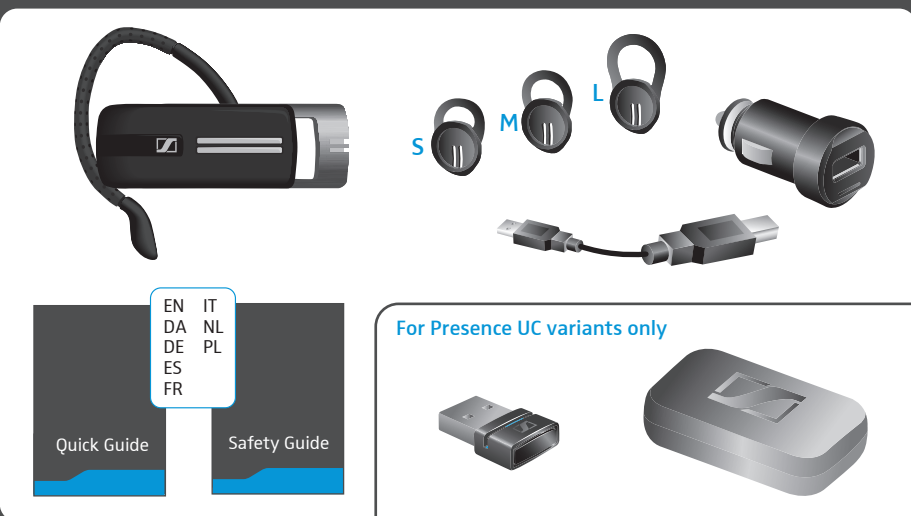
# Presence



Quick Guide  
Kort vejledning  
Kurzanleitung  
Instrucciones resumidas  
Guide rapide  
Istruzioni brevi  
Beknopte gebruiksaanwijzing  
Krótka instrukcja obsługi



Package contents | Leveringsomfang | Lieferumfang | Volumen de suministro | Contenu | Dotazione | Omvang levering | Zakres dostawy



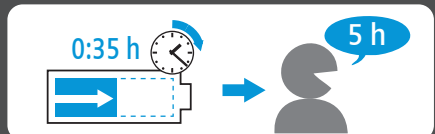
Charging the headset battery | Opladning af genopladeligt batteri | Akku laden | Cargar la pila recargable | Charger la batterie de l'oreillette | Caricamento della batteria | Accu laden | Ładowanie akumulatora

LED flashes	Meaning
1x 🔴	below 1 hour talk time
1x 🔵	1 to 2 hours talk time
2x 🔵	4 to 2 hours talk time
3x 🔵	10 to 4 hours talk time
🔵	100 %

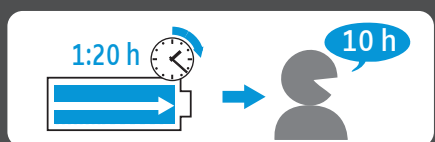
If the headset is fully charged the LED lights up blue. After 5 minutes, the LED goes off. Press the multi-function button to check the battery charge level.

\*not included

Fast charging | Hurtigoplading | Schnellladung | Carga rápida | Chargement rapide | Caricamento veloce | Snelladen | Szybkie ładowanie



Complete charging cycle | Full opladningsproces | Kompletter Ladevorgang | Proceso de carga completo | Cycle de charge complet | Processo di carica completo | Complete opladcyclus | Kompletna operacja ładowania



Retrieving information on the remaining talk time | Forespørgsel på resterende taletid | Verbleibende Sprechzeit abfragen | Consultar la autonomía restante | Vérifier le temps de communication restant | Richiesta del tempo di conversazione residuo | Resterende spreektijd opvragen | Wywołanie informacji o pozostałym czasie rozmowy

- "Between 8 and 10 hours talk time" 3x 🔵
- "Between 4 and 8 hours talk time" 3x 🔵
- "Between 2 and 4 hours talk time" 2x 🔵
- "Between 1 and 2 hours talk time" 1x 🔵
- "Less than 1 hour talk time" 1x 🔴

below 15min talk time, automatic voice prompts: "Recharge headset"

Adjusting and wearing the headset | Tilpasning og brug af hovedsættet | Headset anpassen und tragen | Ajustar y llevar el headset | Adjuster et porter l'oreillette | Indossare e adattare l'headset | De headset aanpassen en dragen | Dostosowanie oraz noszenie zestawu słuchawkowego

### Ear hook

### Ear adapter

Switching the headset on/off | Hovedsæt On/Off | Headset ein-/ausschalten | Conectar/desconectar el headset | Allumer/éteindre l'oreillette | Accensione/Spengimento dell'headset | Headset On/Off | Włączenie/ Wyłączenie zestawu słuchawkowego

### Power on

3x 🔵

- "Power on"
- "... connected"

(see voice prompts)

### Power off

3x 🔴

"Power off"

Pairing the headset | Forbindelse af hovedsættet | Headset verbinden | Conectar el headset | Appairer l'oreillette | Connessione dell'headset | De headset verbinden | Łączenie zestawu słuchawkowego

press and hold while powering on

"Pairing"

1. Activate the Bluetooth® function

2. Search for Bluetooth devices

3. Select the Presence on your device

"Pairing successful"

Swapping the assignment of the volume buttons | Ændring af funktionen for lysterkeknappen | Belegung der Lautstärketasten tauschen | Cambiar la asignación de las teclas de volumen | Permuter la fonction des touches Volume+ et Volume- | Scambio dell'occupazione dei tasti volume | De functie van de volumetoetsen omwisselen | Zmiana głośności

- During an active call - volume 1:** Increases or reduces the speech volume
- During music reproduction - volume 2:** Increases or reduces the music volume
- In idle mode (no active call or music reproduction) - volume 3:** Increases or reduces the volume for the ring tone, the beeps and the voice prompts

Press both volume buttons to swap the +/- assignment of the volume buttons.

Using the headset | Betjening af hovedsættet | Headset bedienen | Manejo del headset | Utiliser l'oreillette | Utilizzo dell'headset | Headset bedienen | Obsługa zestawu słuchawkowego

### Call control features

- Accepts a call
- Ends a call
- Rejects a call
- Redials the last number
- Starts/stops voice dialing
- Transfers a call from the mobile phone to the headset
- Transfers a call from the headset to the mobile phone

### Managing multiple calls

- Accepts the incoming call and puts an active call on hold
- Rejects the incoming call and continues the active call
- Accepts the incoming call and ends the active call

### Mute function

- Mutes the microphone
- Unmutes the microphone

### Automatic voice prompts

- Connected to the Bluetooth device
- Out of the Bluetooth transmission range: